
CV/CC controller ME8327-N

General Description

ME8327-N is a high performance, highly integrated QR(Quasi Resonant Mode)and Primary Side Regulation (PSR)controller for offline small power converter applications.ME8327-N integrates a high voltage power MOSFET of 650V/2A.It has high efficiency and low EMI.ME8327-N can meet EPS level 6 energy standard easily. The IC also has built-in cable drop compensation function, which can provide excellent CV performance.

ME8327-N integrates functions and protections of Under Voltage Lockout (UVLO),VDD Over Voltage Protection(VDD OVP),Output Over Voltage Protection (Output OVP),Soft Start,Cycle-by-cycle Current Limiting (OCP), All Pins Floating Protection,Gate Clamping, VDD Clamping.

Typical Application

- Battery chargers for cellular phones, cordless phones, PDA, digital cameras, etc
- Replaces linear transformer and RCC SMPS
- Small power adapter
- AC/DC LED lighting

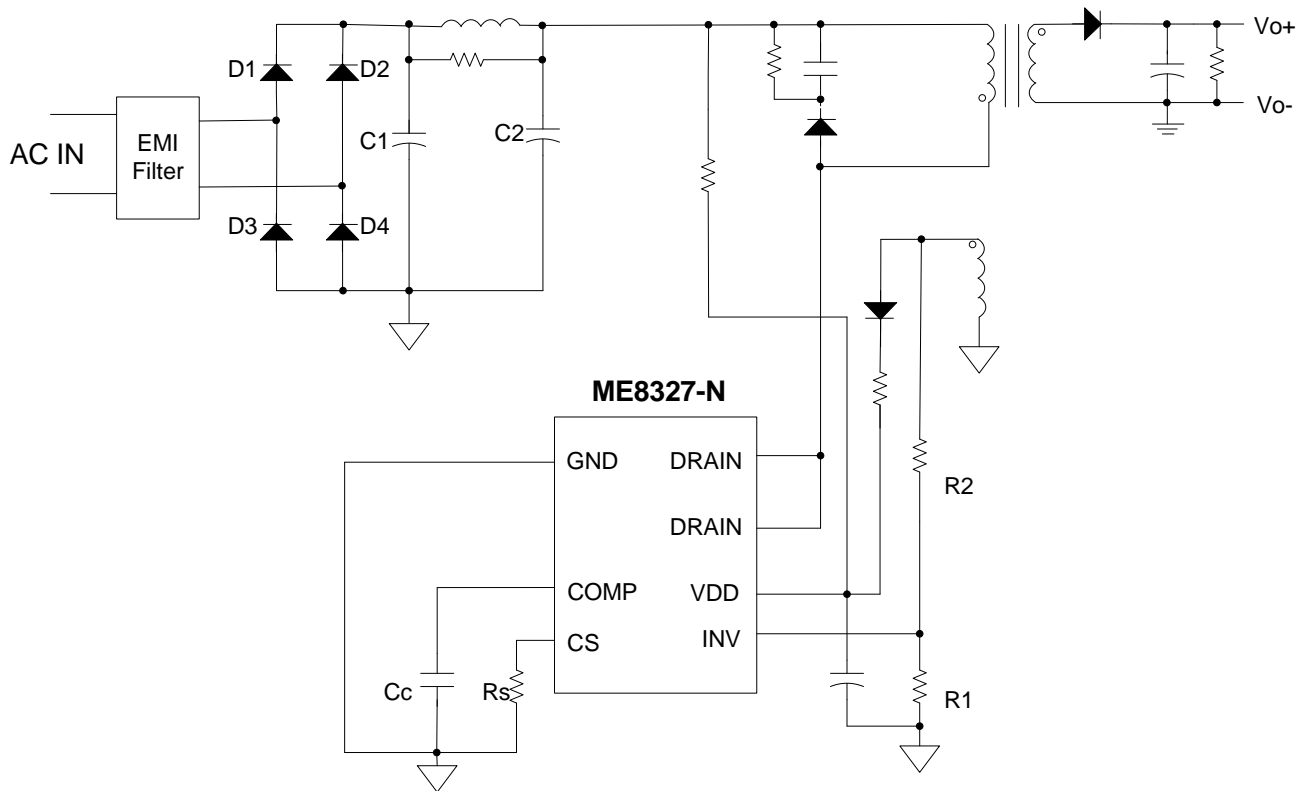
Features

- Easily to Pass Energy Star EPS6.0
- High efficiency and low EMI
- $\pm 5\%$ Constant Current (CC) and Constant Voltage (CV) Regulation at Universal AC Input
- Less than 60mW standby power
- Built-in 650V Power MOSFET
- Maximum output power 15W
- Proprietary cable drop compensation
- Cycle-by-Cycle current limiting
- Built-in Leading Edge Blanking (LEB)
- All Pins Floating Protection
- Built-in Soft Start
- Output Over Voltage Protection
- VDD OVP & Clamp

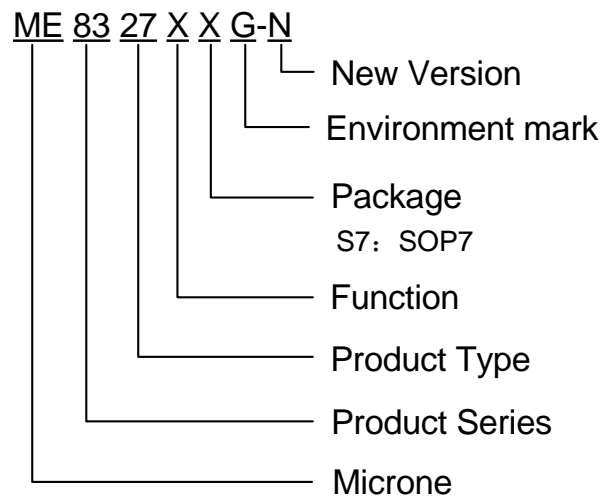
Package

- 7-pin SOP7

Typical Application Circuit

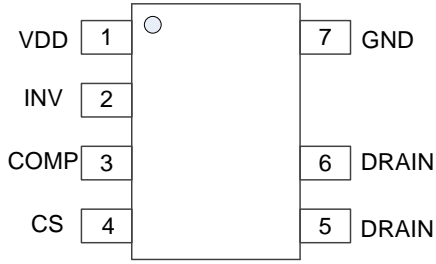


Selection Guide

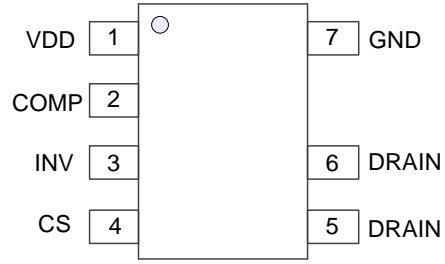


product series	product description
ME8327BS7G-N	Built-in 650V Power MOSFET; Max power:15W; Package: SOP7
ME8327CS7G-N	Built-in 650V Power MOSFET; Max power:15W; Package: SOP7 (different pin)

Pin Configuration & Pin Assignment



SOP7 (ME8327B-N)

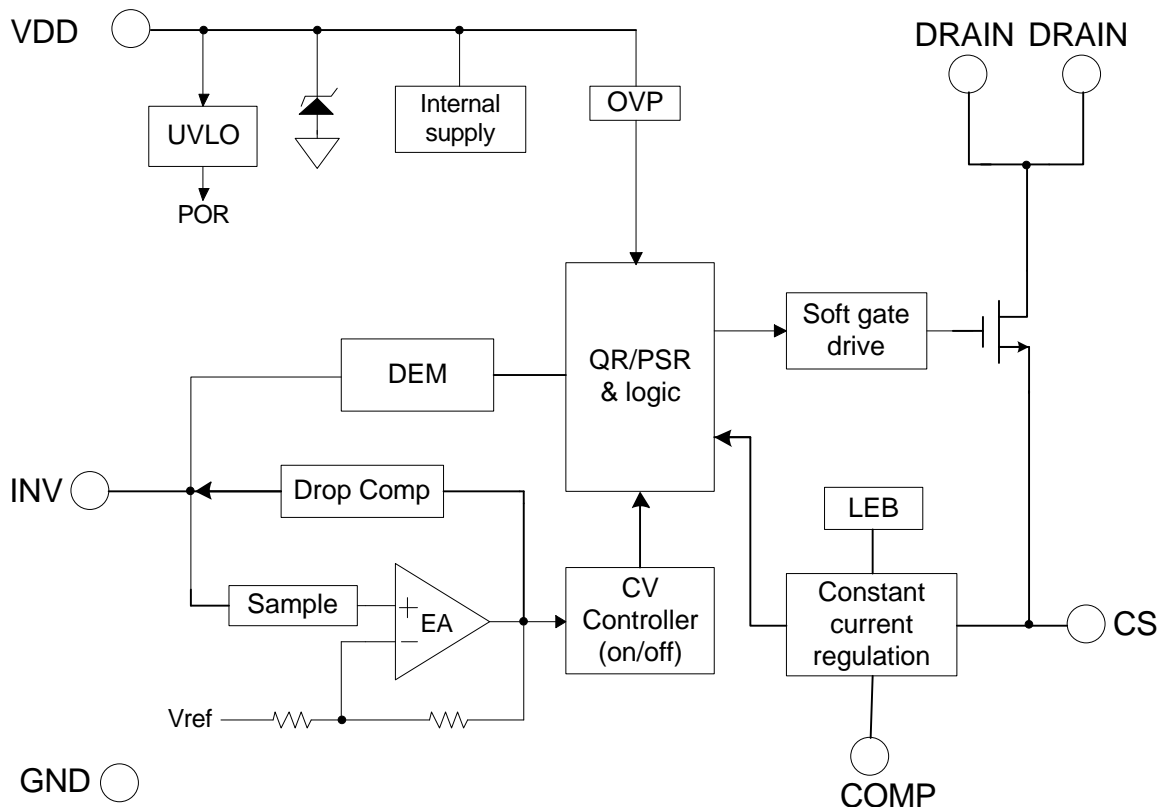


SOP7 (ME8327C-N)

Pin Assignment

Pin Number ME8327B-N	Pin Number ME8327C-N	Symbol	Function
1	1	VDD	Power Supply
2	3	INV	System feedback pin. This control input regulates both the output voltage in CV mode and output current in CC mode based on the flyback voltage of the auxiliary winding
3	2	COMP	Connect a capacitor between this pin and GND for CC regulation
4	4	CS	Current sense
5, 6	5,6	DRAIN	High voltage power MOSFET drain connection
7	7	GND	Ground

Block Diagram



Absolute Maximum Ratings

Parameter		Ratings	Unit
VDD DC supply Voltage		35	V
VDD DC clamp current		10	mA
COMP, CS Voltage range		-0.3 ~ 7	V
INV Voltage range		-0.7 ~ 7	V
Storage Temperature range		-55~+150	°C
Junction Temperature range		-40~+150	°C
Operating Ambient Temperature range		-40~+85	°C
Lead temperature(Soldering, 10sec.)		260	°C
ESD capability, HBM(Human body model)		2	KV
ESD capability, MM(Machine model)		250	V
Thermal resistance(Junction to air) θ_{JA}	SOP7	86	°C/W
Continuous Total Power Dissipation P_D	SOP7	1.45	W

Caution: The absolute maximum ratings are rated values exceeding which the product could suffer physical damage.

These values must therefore not be exceeded under any conditions.

Recommended working condition

Parameter	Min	Typ.	Max	Unit
Power supply voltage, VDD	10	-	30	V
Operating Ambient Temperature	-40	-	85	°C
Maximum switching Frequency	-	120	-	KHz

Electrical Characteristics (Test conditions: VDD=16V, T_A=25°C unless otherwise stated)

Item	Testing condition	Min	Typ.	Max	Unit
Supply Voltage (VDD) Section					
Start up Current I _{START}	VDD=UVLO(ON)-1V Measure current into VDD	-	2	20	μA
Operating Current I _{DD}	V _{INV} =1V, CL=0.5nF VDD=20V	-	0.9	1.5	mA
VDD Under Voltage Lockout Exit (Recovery) (UVLO _{OFF})	VDD Falling	7.8	8.8	9.8	V
VDD Under Voltage Lockout Enter (UVLO _{ON})	VDD Rising	19.5	20.5	21.5	V
VDD Over voltage protection trigger(OVP)		32	34	36	V
VDD Zener clamp voltage (VDD_Clamp)	I _{VDD} =7mA	-	39	-	V
Feedback Input Section(INV Pin)					
Internal Error amplifier(EA) reference input V _{INV_EA_Ref}		1.98	2.0	2.02	V
Minimum OFF time T _{min_off}		-	2	-	μS
Maximum OFF time T _{max_off}		-	3.2	-	mS

Max cable compensation current I _{cable_max}		-	65	-	μA
Current Sense (CS pin)					
Leading Edge Blanking of CS, LEB		-	500	-	nS
Over Current detection and control delay T _{D_OC}		-	100	-	nS
Constant current control (COMP pin)					
Internal COMP voltage V _{COMP_REF}		0.98	1.0	1.02	mV
Protection section					
Overheat protection temperature T _p		-	150	-	°C
MOSFET SECTION					
Drain-Source Voltage	V _{GS} =0	650	-		V
Static Drain-Source On-Resistance	V _{GS} =10V, I _d =1.0A	-	4.5	5.6	Ω
COOLMOS SECTION					
Drain-Source Voltage	V _{GS} =0	650	-		V
Static Drain-Source On-Resistance	V _{GS} =10V, I _d =1.0A	-	2.2	2.5	Ω

Application Information

ME8327-N is a high performance, multi mode controlled, highly integrated QR (Quasi Resonant) Primary Side Regulation (PSR) controller. The built-in high precision CV/CC control with high level protection features make it very suitable for offline small power converter applications.

- **Start-up current and start-up control**

Start-up current of ME8327-N is designed to be very low (typically 2μA) so that VDD could be charged up above UVLO_{ON} threshold level and device starts up quickly. A large value start-up resistor can therefore be used to minimize the power loss yet reliable start-up in application.

- **Operating current**

The operating current in ME8327-N is as small as 1mA (typical). The small operating current results in higher efficiency and reduces the VDD hold-up capacitance requirement.

- **QR/PSR Control**

ME8327-N uses a proprietary QR/PSR control for high efficiency and low EMI. The IC works in Quasi-Resonant (QR) mode in Constant Current (CC) and Constant Voltage (CV) mode. In this way, the efficiency is boosted and the EMI is reduced greatly. The IC can easily meet EPS level 6 energy standard.

- **Constant Current (CC) Regulation**

ME8327-N can accurately control the output current by the internal current feedback control loop. The output mean current in constant current (CC) mode can be approximately expressed as:

$$I_{CC}(\text{mA}) = \frac{N}{2} \times \frac{500(\text{mV})}{R_{CS}(\Omega)}$$

In the equation above, N ---The turn ratio of primary side winding to secondary side winding.

R_{cs} --- the sensing resistor connected between the MOSFET source to GND.

- **Precision CV/CC Performance**

In ME8327-N the parameters are trimmed to tight range, which makes the system CC/CV to have less than $\pm 5\%$ variation.

- **Soft Start**

ME8327-N features an internal soft start that slowly increases the threshold of cycle-by-cycle current limiting comparator during start-up sequence. It reduces the stress on the secondary diode during start-up. Every start-up process is followed by a soft start activation.

- **Proprietary Cable Voltage Compensation in CV Mode**

When it comes to cellular phone charger applications, the battery is located at the end of cable, which causes typically several percentage of voltage drop on the actual battery voltage. ME8327-N has a proprietary built-in cable voltage drop compensation block which can provide a constant output voltage at the end of the cable over the entire load range in CV mode.

- **Leading Edge Blanking (LEB)**

Each time the power MOSFET is switched on, a turn-on spike occurs across the sensing resistor. To avoid premature termination of the switching pulse, an internal leading edge blanking circuit is built in. During this blanking period (500ns, typical), the cycle-by-cycle current limiting comparator is disabled and cannot switch off the gate driver. Thus, external RC filter with a small time constant is enough for current sensing.

- **Minimum and Maximum OFF Time**

In ME8327-N, a minimum OFF time (typically 2us) is implemented to suppress ringing when GATE is off. The minimum OFF time is necessary in applications where the transformer has a large leakage inductance, particularly at low output voltages or start-up. The maximum OFF time in ME8327-N is typically 3ms, which provides a large range for frequency reduction. In this way, a low standby power of 100mW can be achieved.

- **VDD OVP(Over Voltage Protection)**

VDD OVP (Over Voltage Protection) is implemented in ME8327-N and it is a protection of auto-recovery mode.

- **Pin Floating Protection**

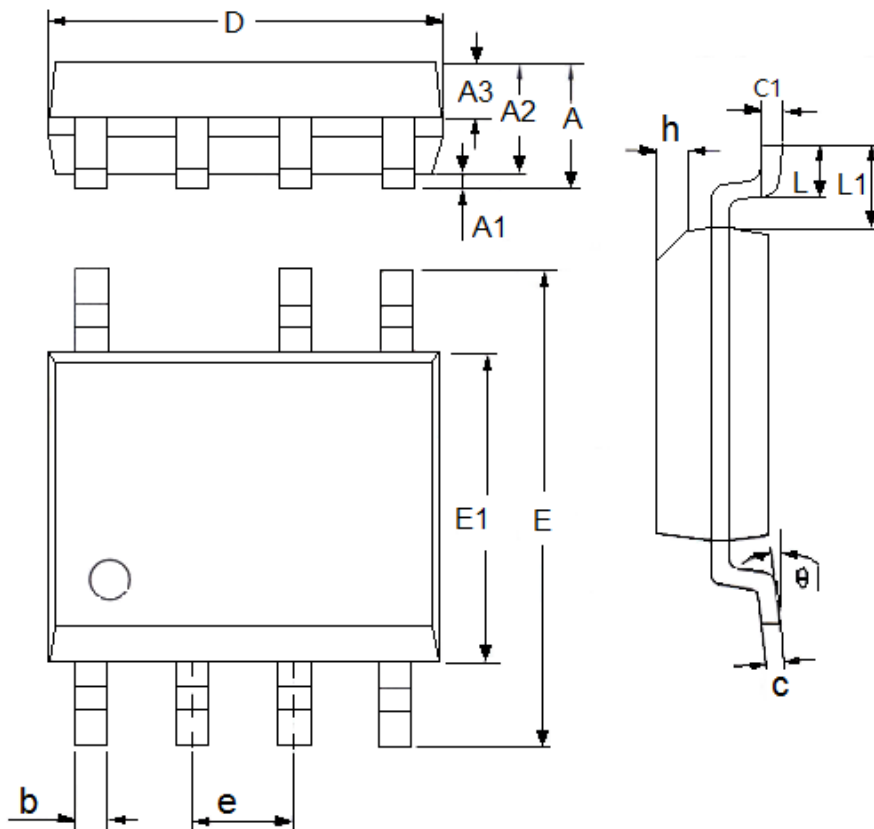
In ME8327-N, if pin floating situation occurs, the IC is designed to have no damage to system.

- **Soft Gate Drive**

ME8327-N has a soft totem-pole gate driver with optimized EMI performance. An internal 16V clamp is added for MOSFET gate protection at higher than expected VDD input.

Packaging Information

- SOP7



DIM	Millimeters		Inches	
	Min	Max	Min	Max
A	1.35	1.75	0.0531	0.0689
A1	0.05	0.25	0.0020	0.0098
A2	1.25	1.65	0.0492	0.0650
A3	0.5	0.7	0.0197	0.0276
b	0.33	0.51	0.0130	0.0201
c	0.17	0.25	0.0067	0.0098
D	4.7	5.1	0.1850	0.2008
E	5.8	6.2	0.2283	0.2441
E1	3.8	4	0.1496	0.1575
e	1.27(TYP)		0.05(TYP)	
h	0.25	0.5	0.0098	0.0197
L	0.4	1.27	0.0157	0.0500
L1	1.04(TYP)		0.0409(TYP)	
theta	0	8°	0.0000	8°
c1	0.25(TYP)		0.0098(TYP)	

- The contents of this document will be updated with the product's improvement without prior notice. Please consult our sales staff before using this document to ensure that you are using the latest version.
- The application circuit examples described in this document are only used to indicate the representative use of the product and do not guarantee the design of mass production.
- Please use this product within the limits stated in this document. We will not be responsible for any damage caused by improper use.
- The products described in this document are not allowed to be used in equipment or devices that affect the human body without the written permission of our company, including but not limited to: health equipment, medical equipment, disaster prevention equipment, fuel control equipment, automobile equipment, aviation equipment and vehicle equipment.
- Although our company has always been committed to improving product quality and reliability, semiconductor products have a certain probability of malfunction or wrong work. To prevent personal injury or property damage caused by such accidents, please pay full attention to safety design, for example: Alternate design, fire protection design, and prevention of wrong action design.
- When exporting this product or this document overseas, you should abide by applicable import and export control laws.
- Copying or reprinting part or all of this document in any form without the permission of our company is strictly prohibited.